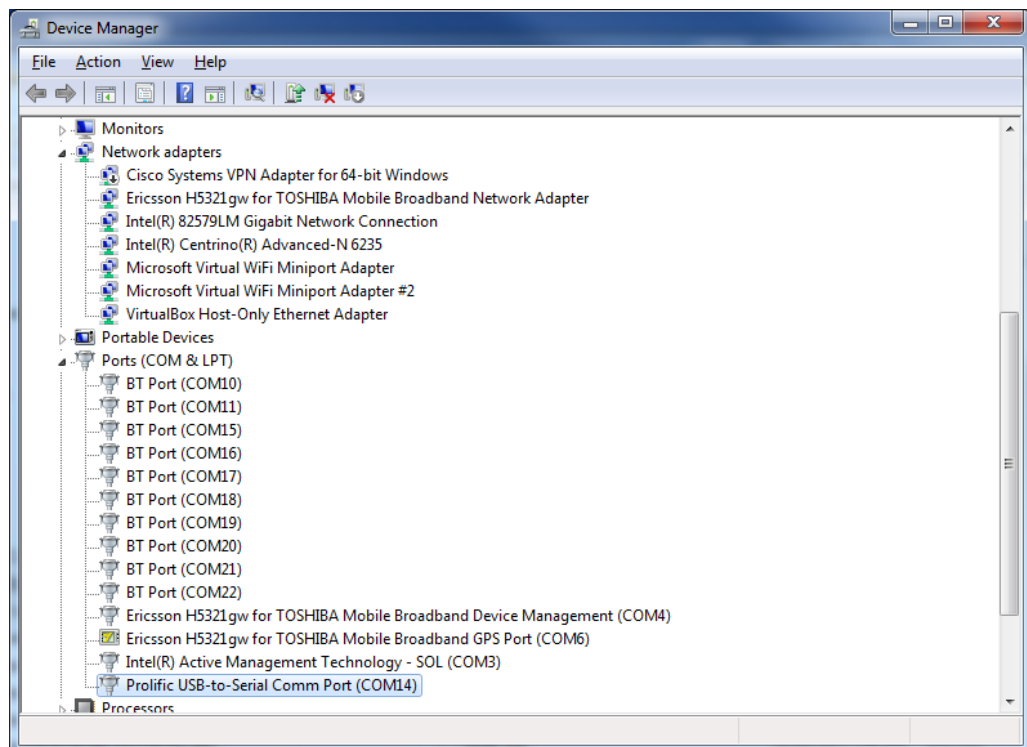


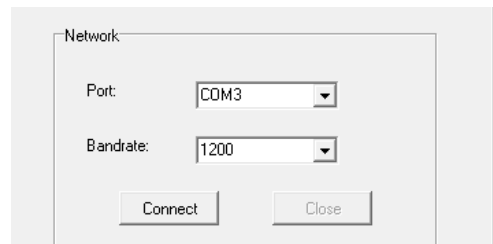
Programming Bafang BBS01/ 02 - A Brief Guide

Note. Guide written for windows 7 64bit operating system

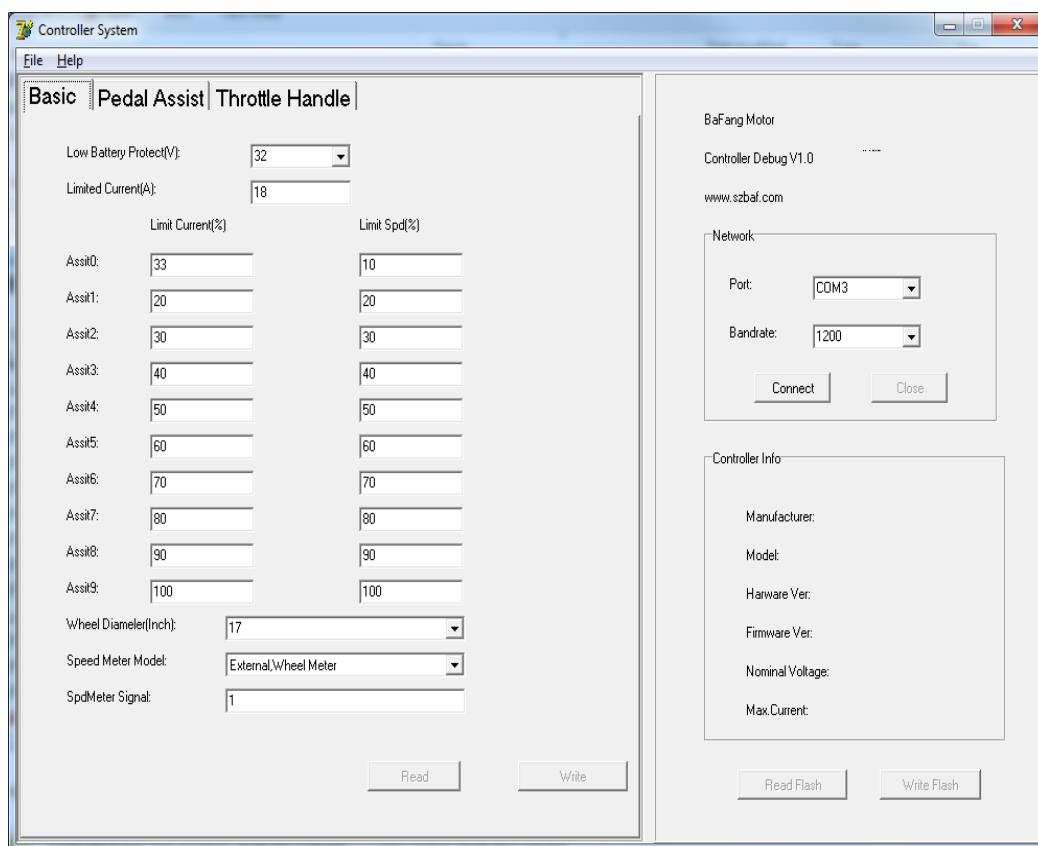
1. Extract PL2303HX to a local folder on your machine and run the install for your operating system version. Restart computer.
2. Extract controllersoftware.zip to a local folder on your machine.
3. Plug the USB cable into a spare port on your computer. The other end of the cable plugs into the **green male connector which connects to the display on the Bafang Kit**. The connection point is 30cm from the display.
4. Once connected power on your battery. **Ensure both computer and kit connections are solid before doing this!**
5. Your computer should recognise the prolific serial to USB converter. His start menu and type 'device manager'. Under 'Ports' take note of the Com port which the Prolific USB-to-Serial is connected to.



- Open up the controllercst.exe program. Enter the COM port number in the right hand side and click connect. You should see the controller info appear.



- Hit read to read in the left hand side of the window to read the controllers existing settings.



- Update settings as desired. You will need to hit 'write' followed by 'write flash' for each tab (basic, pedal assist and throttle). If the software does not respond close the connection and software and try again.
- Below is a description of parameters you can change. **NOTE – Changing Current (A) to a higher value will void warranty on the controller component of the conversion kit and can cause battery issues if battery cannot handle the higher discharge rate. Think carefully about changing speed limit and always ride with care.**

Basic

Basic is relatively self-explanatory. The Low Voltage protect and limit current (A) should not be changed. The PAS levels Limit Current (%) and Limit Speed (%) changes the amount of power and speed available in each PAS level. Wheel diameter should be set to match your bike and the speed meter is external mode 1.

Pedal Assist

Note: Change conservatively. Make small incremental changes and test rather than large ones.

Slow Start Mode(1-8) – Controls how fast the power ramps up when you start pedalling 8 is fastest 1 the slowest.

Startup Degree(Signal No)- Controls the amount of pedal rotation before power kicks in lower is less rotation.

Work Mode(Angular Speed of pedal/wheel*10) - Adjusts the amount of power that can be applied to each pedal rotation. The higher the number the greater the power applied to each rotation.

Change conservatively.

Current Decay – Measures how long the unit holds power level when pedal effort is decreased.

Stop Decay – The amount of time the system takes to cut after pedalling stops. Lower is faster.

Keep Current – Specifies the total amount of power available in PAS mode. Best to leave below 100 and use throttle as 100% 'boost'.

Throttle Handle

Start Voltage – The level of voltage available when throttle is first applied. Best to leave between 10 and 15.

End Voltage – Leave as 35.

Mode – Leave as current.

Designated assist – The assist level current and limits that the throttle use. Default is 9 for 9 levels of PAS.

Speed Limited – Set your speed limit of throttle use.

Start Current % - Percentage current of available when throttle initially applied. Leave 10 or below.